



# VIS INTSUM

## Information from D11

**DISCLAIMER:**

This is for multiplayer online gaming using the Digital Combat Systems simulation software published by Eagle Dynamics. The information is not in any way suitable for real world use or operations.



**RESPONSIBLE: VIS**

- D12.1: Day, overcast, winds from North-East
- D12.2: Day, overcast, rain, winds from North-East
- D13.1: Day, clear skies, winds from North-East
- D13.2: Day into night, clear skies, winds from North-East
- D14.1: Day, scattered/broken, winds from North-East
- D14.2: Night, overcast, winds from North-East
- D15.1: Day, scattered, winds from North-east
- D15.2: Day into night, clear skies, winds from North-East

**Explanation:**

- **Green:** Good conditions, VFR, easy to spot targets from all altitudes. No impact on tactics
- **Yellow:** Can be challenging to spot targets from high altitude due to clouds / low visibility. May have impact on tactics
- **Red:** Overcast and/or other conditions that make acquiring targets difficult. Will have impact on tactics

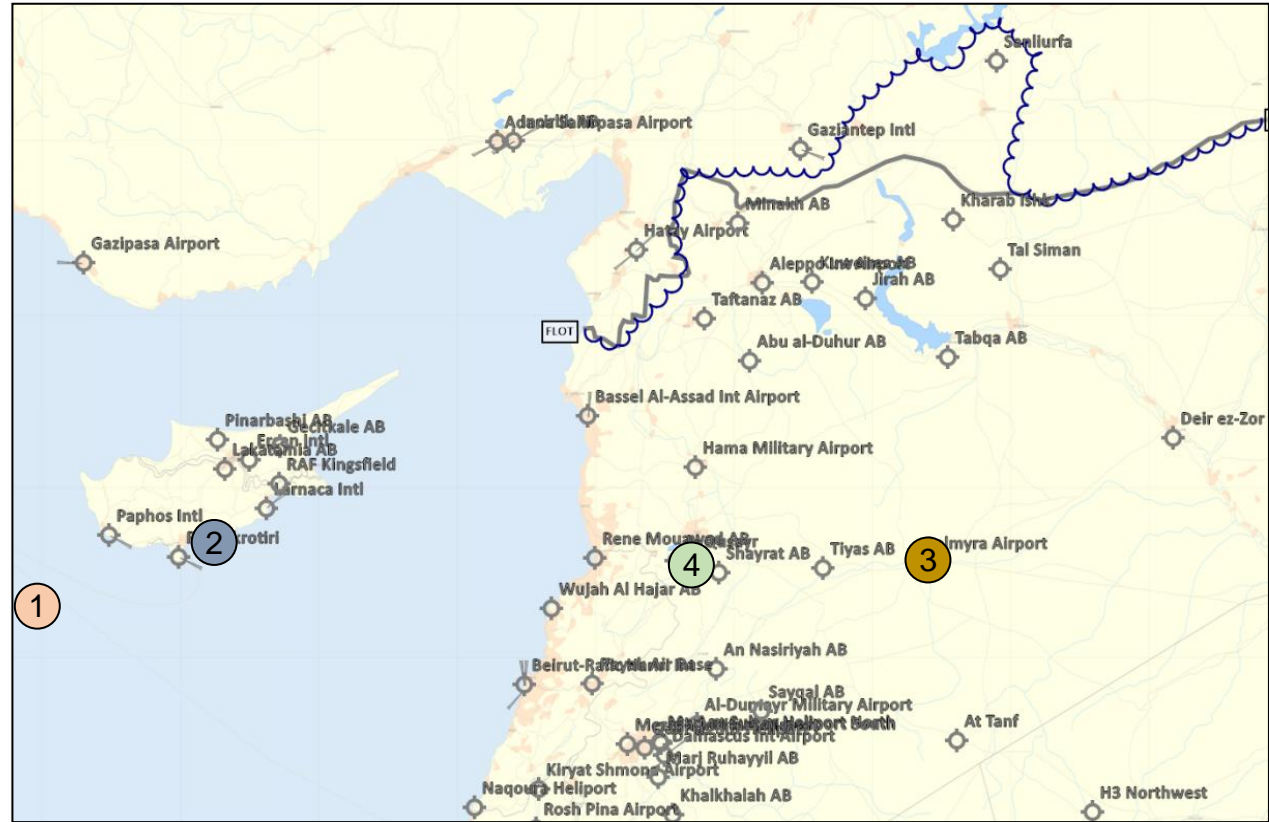




RESPONSIBLE: VIS

## Significant events:

- Downing of RUS TU-22 (1)
- Amphibious assault (2)
- Strike at Palmyra runway (3)
- Strike at Syrian Air Defence Academy (4)



DISCLAIMER:

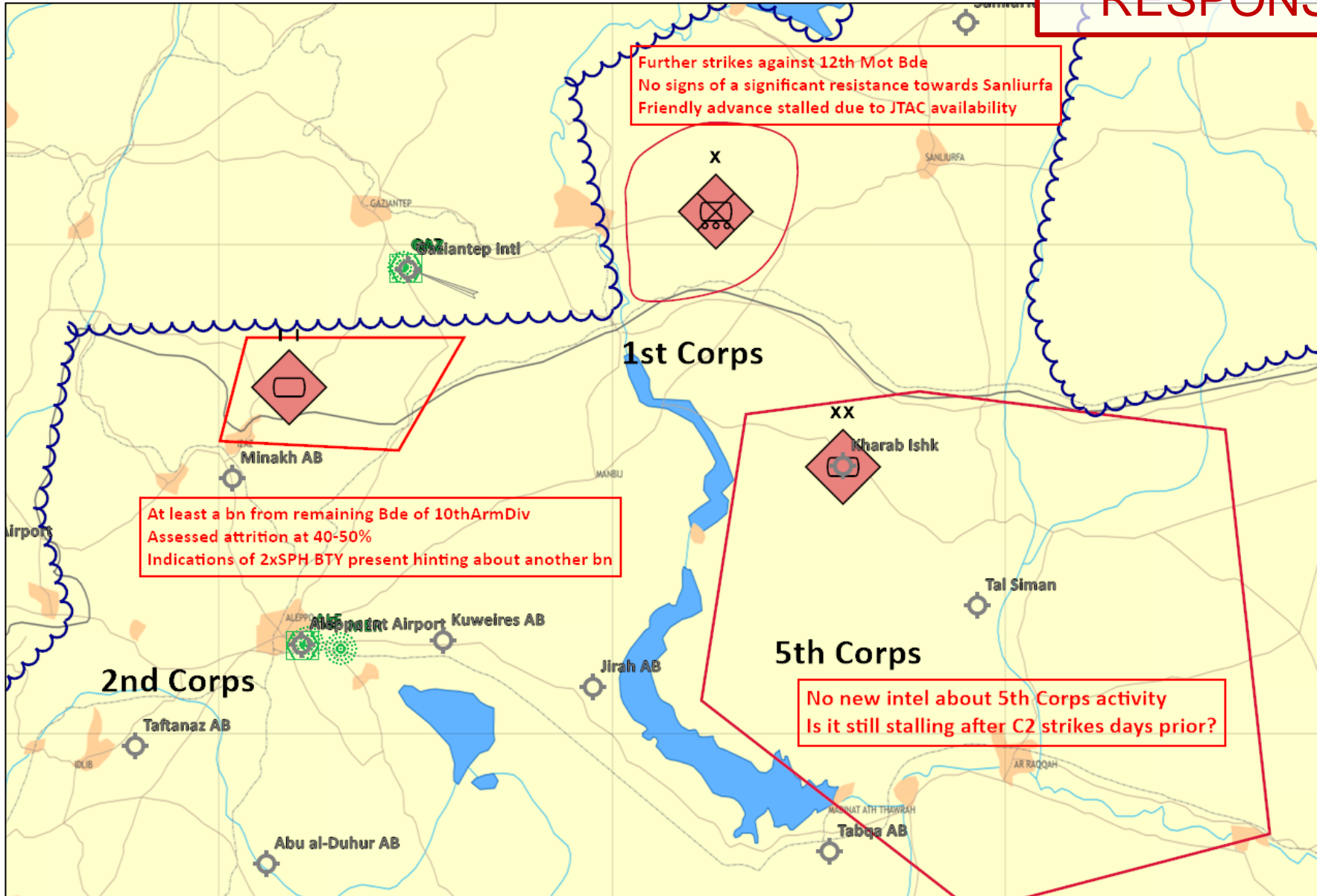
This is for multiplayer online gaming using the Digital Combat Systems simulation software published by Eagle Dynamics. The information is not in any way suitable for real world use or operations.



# ENEMY SITUATION (GROUND)



**RESPONSIBLE: VIS**



DISCLAIMER:

This is for multiplayer online gaming using the Digital Combat Systems simulation software published by Eagle Dynamics. The information is not in any way suitable for real world use or operations.





# ENEMY SITUATION (GROUND)



**RESPONSIBLE: VIS**

### 2.2.1 Russian amphibious landing ship (Ropucha) capacity

VID have the following assessment of the capacity of Russian landing ship Ropucha:

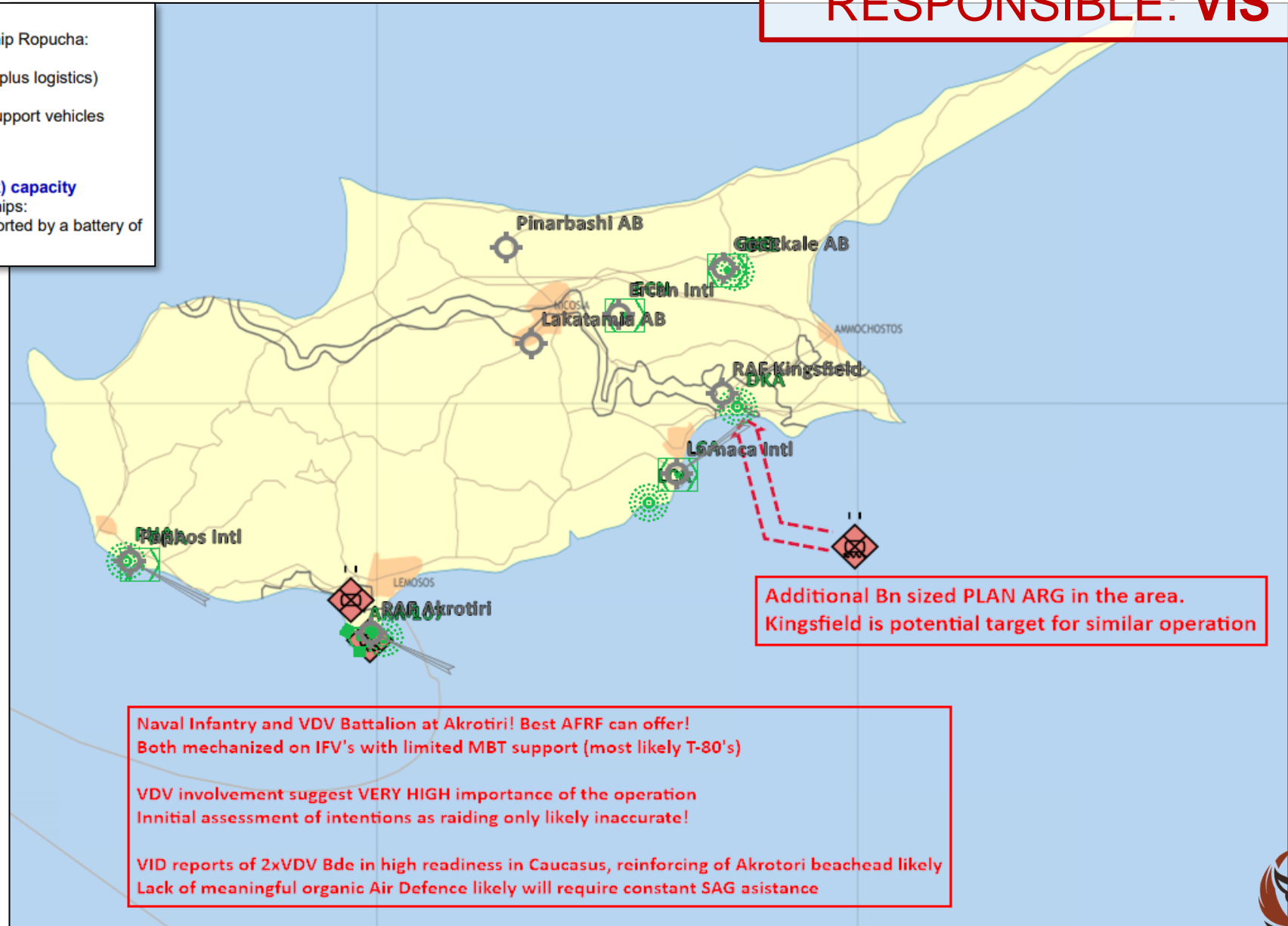
The Ropucha is LIKELY able to carry the following:

- A mechanized/motorized/armored company (9x IFV/APC/Tanks, plus logistics)
- OR
- 3x MBT, 3x 2S9 Nona artillery and 5x MTLB APC and logistics support vehicles (Amphibious company task group. A self sufficient combat unit)

### 2.2.2 Chinese landing ships (Type 071 Amphibious transport dock) capacity

VID have the following assessment of the capacity of Chinese landing ships:

A Type 071 is LIKELY able to carry one battalion of ground forces, supported by a battery of artillery.



**Additional Bn sized PLAN ARG in the area. Kingsfield is potential target for similar operation**

**Naval Infantry and VDV Battalion at Akrotiri! Best AFRF can offer!  
Both mechanized on IFV's with limited MBT support (most likely T-80's)**

**VDV involvement suggest VERY HIGH importance of the operation  
Initial assessment of intentions as raiding only likely inaccurate!**

**VID reports of 2xVDV Bde in high readiness in Caucasus, reinforcing of Akrotiri beachhead likely  
Lack of meaningful organic Air Defence likely will require constant SAG assistance**

DISCLAIMER:





# ENEMY SITUATION (AIR)



## Overall

- 2x Russian TU-22 destroyed
- 4x Syrian SU-27 destroyed
- 1x Syrian MiG-23 destroyed
- 5x Syrian MiG-25 destroyed
- 7x Syrian MiG-29 destroyed
- 12x Coalition aircraft lost (1xA10, 8xF16, 3xF/A-18C)

- ALMOST CERTAIN Bassel Al-Assad used by Russian forces.  
LIKELY composition and strength:
  - 8x SU-27
  - 4x SU-34
  - 1x IL-76
- ALMOST CERTAIN Beirut used by Chinese forces.  
LIKELY composition and strength:
  - 12x MiG-29 or equivalent
  - 2x J-11 or equivalent
  - 2x H6-J
  - 4x IL-76
  - 1x A-50
- ALMOST CERTAIN Rayak used by Chinese forces.  
LIKELY composition and strength:
  - 1x AN-30
  - 2x WL-1

DISCLAIMER:

This is for multiplayer online gaming using the Digital Combat Systems simulation software published by Eagle Dynamics. The information is not in any way suitable for real world use or operations.

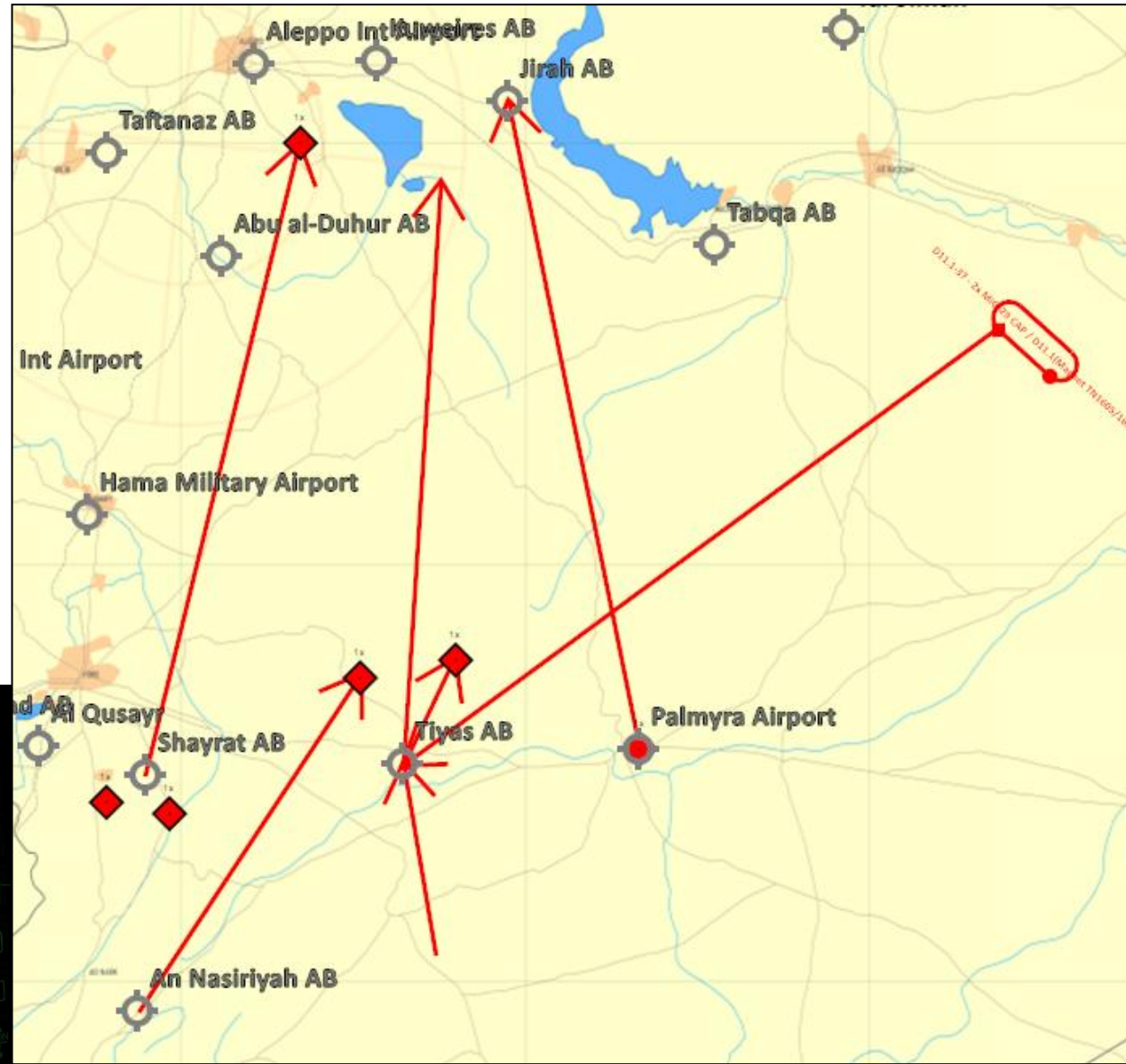


# ENEMY SITUATION (AIR)



## Syrian activity

- Syrians destroyed 9x Coalition aircraft
- Syrian air activity limited to VERY LIKELY CAP and QRA.
- Tabqa airfield HIGHLY LIKELY abandoned. EVEN CHANCE that it is remaining an important airfield.
  - Aircraft HIGHLY LIKELY moved to Palmyra
  - Repairs of runway in previous days
  - IADS presence
- HIGHLY LIKELY aircraft from TABQA spotted at Palmyra airbase



DISCLAIMER:

This is for multiplayer online gaming using the Digital Combat Systems simulation software published by Eagle Dynamics. The information is not in any way suitable for real world use or operations.



# ENEMY SITUATION (AIR)



## Russian activity

- 2x Russian TU-22 destroyed
- 1x Coalition F/A-18C engaged and destroyed during intercept
- Various CAP areas observed
- Ongoing low level TU-142 patrols overhead Russian fleet
- Russian AWACS activity South of Cyprus
- LIKELY Russian activity originating out of Egypt or other locations in that area.
- EVEN CHANCE 4x Syrian or Russian aircraft were moved from An Nasiriyah to Al Quasyr.



DISCLAIMER:

This is for multiplayer online gaming using the Digital Combat Systems simulation software published by Eagle Dynamics. The information is not in any way suitable for real world use or operations.



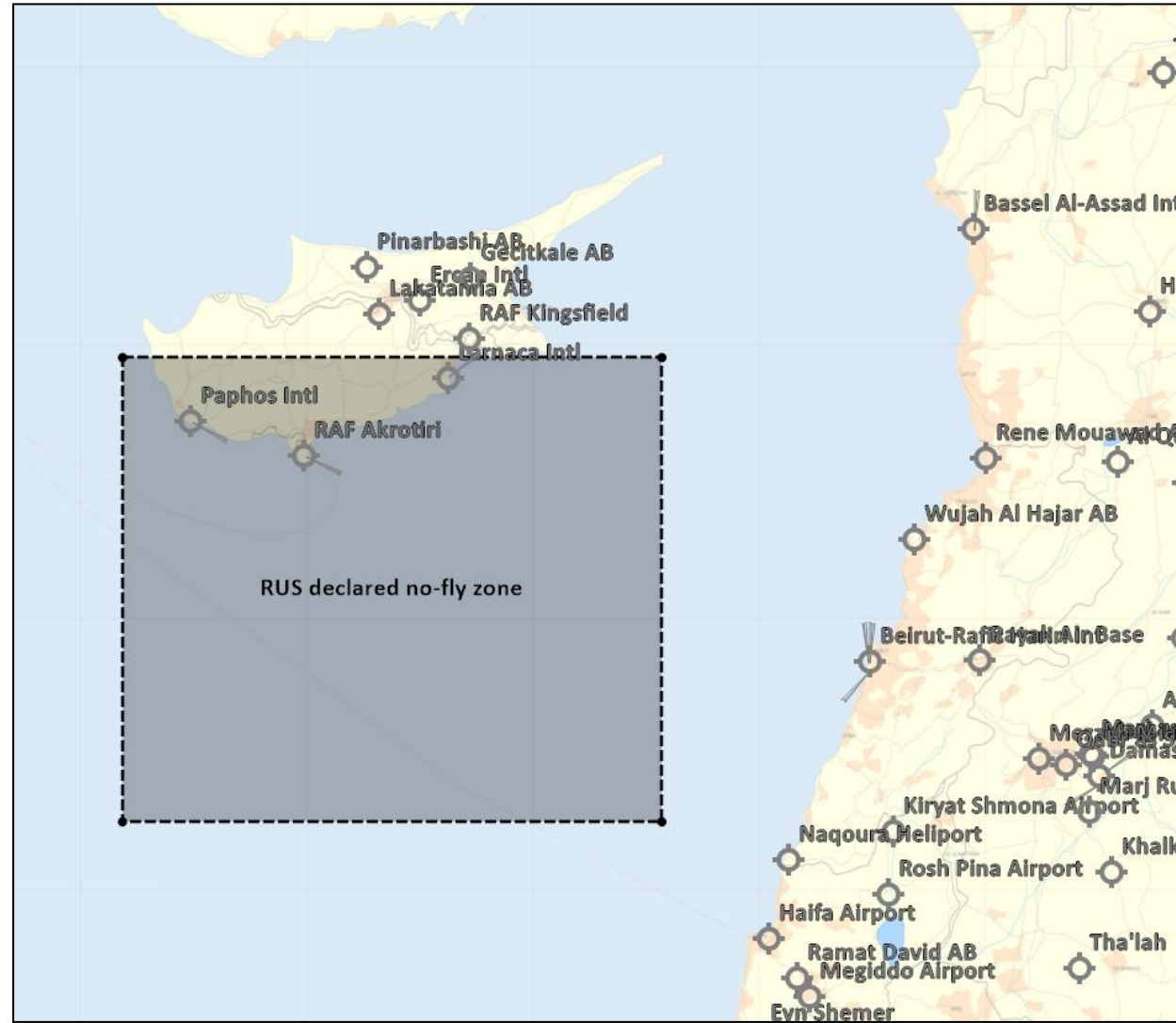


# ENEMY SITUATION (AIR)



## Russian activity

- Russia declared a no-fly zone south of Cyprus in response to the loss of the 2x TU-22 covering the Cyprus invasion area as well as their area of operations.
- Severe risk-increase for Coalition operations south of Cyprus



DISCLAIMER:

This is for multiplayer online gaming using the Digital Combat Systems simulation software published by Eagle Dynamics. The information is not in any way suitable for real world use or operations.

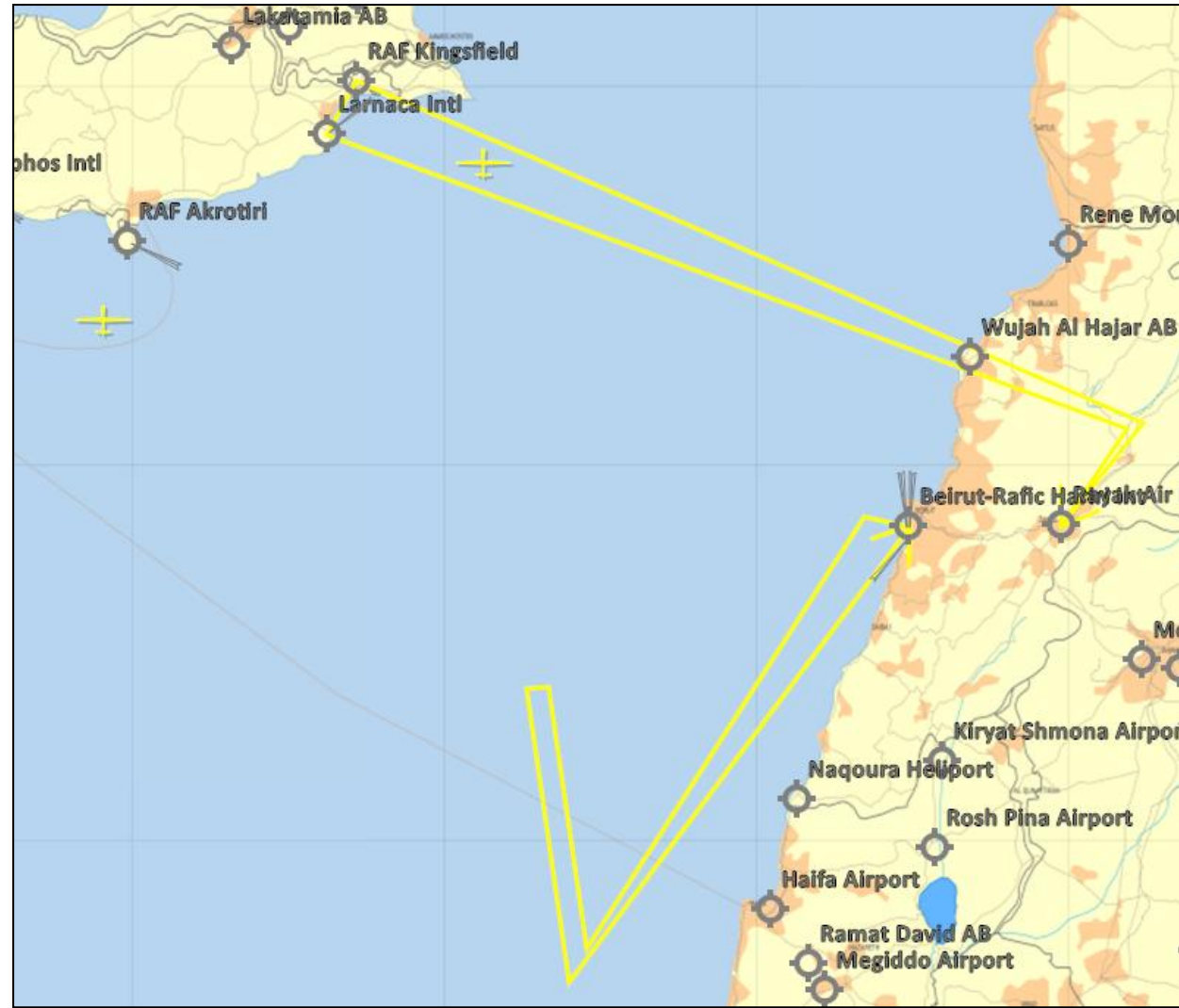


# ENEMY SITUATION (AIR)



## Chinese activity

- Continued Chinese air activity around Cyprus including use of (armed) drones
- LIKELY reconnaissance drones used to gather intel about Southern Cyprus airfields (Akrotiri, Larnaca, Kingsfield).
- HIGHLY LIKELY AN-30 activity from Rayak to Larnaca and back
- UNIDENTIFIED aircraft operation out of Beirut close to Chinese (?) fleet.



**DISCLAIMER:**

This is for multiplayer online gaming using the Digital Combat Systems simulation software published by Eagle Dynamics. The information is not in any way suitable for real world use or operations.



- 2x Russian TU-22 destroyed
- 4x Russian SU-27 destroyed
  
- 1x Syrian MiG-23 destroyed
- 5x Syrian MiG-25 destroyed
- 7x Syrian MiG-29 destroyed

Location	Fraction	Status	Last Attack	J-11	MiG-21	MiG-23	MiG-25	MiG-29	SU-24	SU-27	SU-33	SU-34	H-6J	A-50	AN-26B	AN-30	IL-76	WL-1	YAK-40	Unknown	Total	
Abu al-Duhur	Syria	OPERATIONAL	---	---	0	---	---	---	---	---	---	---	---	---	---	---	---	---	---	---	---	0
Al Dumayr Mil	Syria	OPERATIONAL	---	---	12	---	---	---	---	---	---	---	---	---	6	---	---	---	6	---	---	24
Al Quasayr AB	Syria	OPERATIONAL	---	---	---	0-2	---	---	---	---	---	---	---	---	---	---	---	---	---	4	---	4-6
An Nasiriyah AB	Syria	OPERATIONAL	---	---	---	---	9-10	12-24	---	---	---	---	---	---	---	---	---	---	---	---	---	21-34
Bassel Al-Assad	Russia	OPERATIONAL	---	---	---	---	---	---	---	4	---	4	---	---	---	---	1	---	---	---	---	9
Beirut Intl	China	OPERATIONAL	---	2	---	---	---	12	---	---	---	---	2	1	---	---	4	---	---	---	---	21
Deir-es-Zor AB	Syria	OPERATIONAL	---	---	---	---	---	0-1	---	---	---	---	---	---	---	---	---	---	---	---	---	0-1
Hama Mil AB	Syria	REPAIRS-ONGOING	???	---	10	---	---	---	---	---	---	---	---	---	---	---	---	---	---	---	---	10
Khalkhalah AB	Syria	OPERATIONAL	---	---	0-24	---	---	0-12	---	---	---	---	---	---	---	---	---	---	---	---	---	0-36
Marj Ruhayl	Syria	OPERATIONAL	---	---	0-24	---	---	---	7	---	---	---	---	---	---	---	---	---	---	---	---	7-31
Palmyra	Syria	INOP	D11.2 (6d)	---	---	---	2-3	0-4	12	---	---	---	---	---	---	---	---	---	---	---	---	14-31
Rayak AB	China	OPERATIONAL	---	---	---	---	---	---	---	---	---	---	---	---	---	1	---	2	---	---	---	3
Shayrat AB	Syria	OPERATIONAL	---	---	---	0-4	---	---	---	---	---	---	---	---	---	---	---	---	---	---	---	0-4
Tabqa AB	Syria	INOP	D11.1 (6d)	---	---	---	---	---	---	---	---	---	---	---	---	---	---	---	---	---	---	0
Tiyas AB	Syria	OPERATIONAL	---	---	---	---	---	3-15	---	---	---	---	---	---	---	---	---	---	---	---	---	3-15
<b>TOTAL</b>				2	22-70	0-6	11-13	27-68	19	4	0	4	2	1	6	1	5	2	6	4		116-225

DISCLAIMER:

This is for multiplayer online gaming using the Digital Combat Systems simulation software published by Eagle Dynamics. The information is not in any way suitable for real world use or operations.

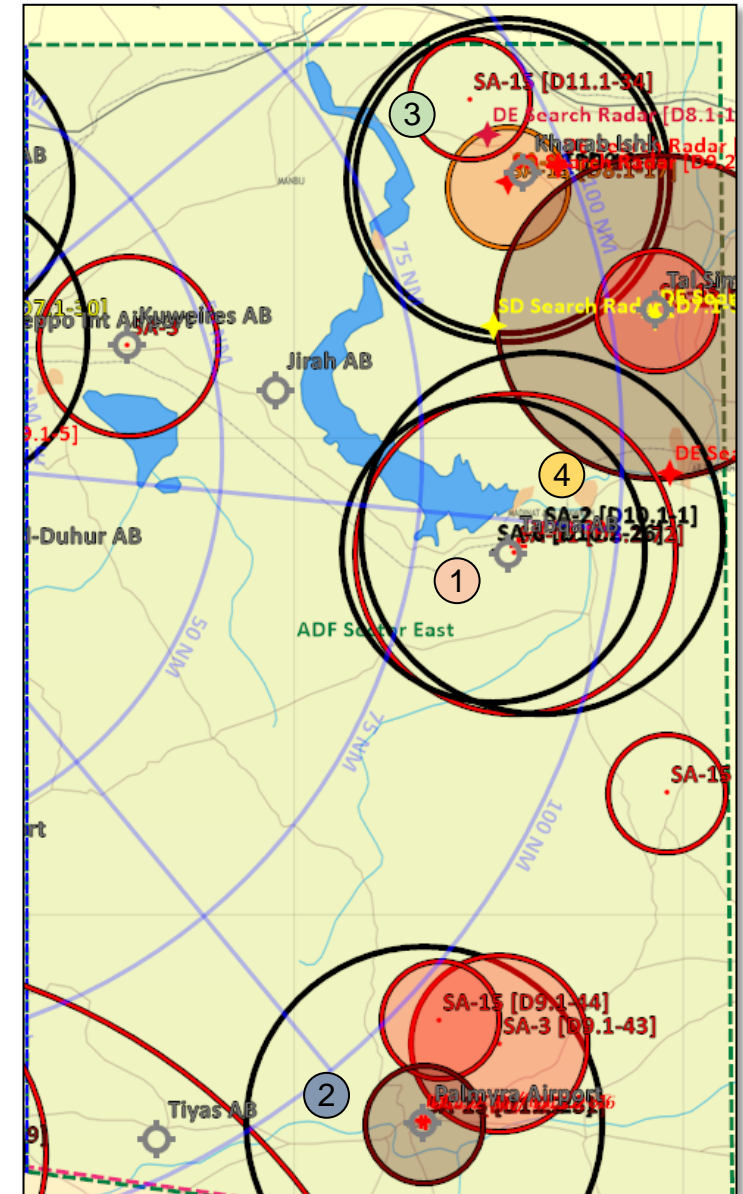


# ENEMY SITUATION (IADS)



## • Important Events during D11: Sector East

- ① SA-6 STR destroyed at Tabqa AB
  - Only Remaining SAM IVO Tabqa is a possible SA-11, VIS assessed UNLIKELY to be present
- ② SA-2 Site at Palmyra AB reported to be missing STR. BDA unknown.
- ② 2x SA-15 destroyed at Palmyra AB
  - Point defences at the airbase may indicate HVT in the area, possibly backup SCC East
- ③ SA-15 and SA-8 spotted NNW from Kharab Ishk
- ④ Raqqa Vehicle Factory (SA-2) assembly plants destroyed



DISCLAIMER:

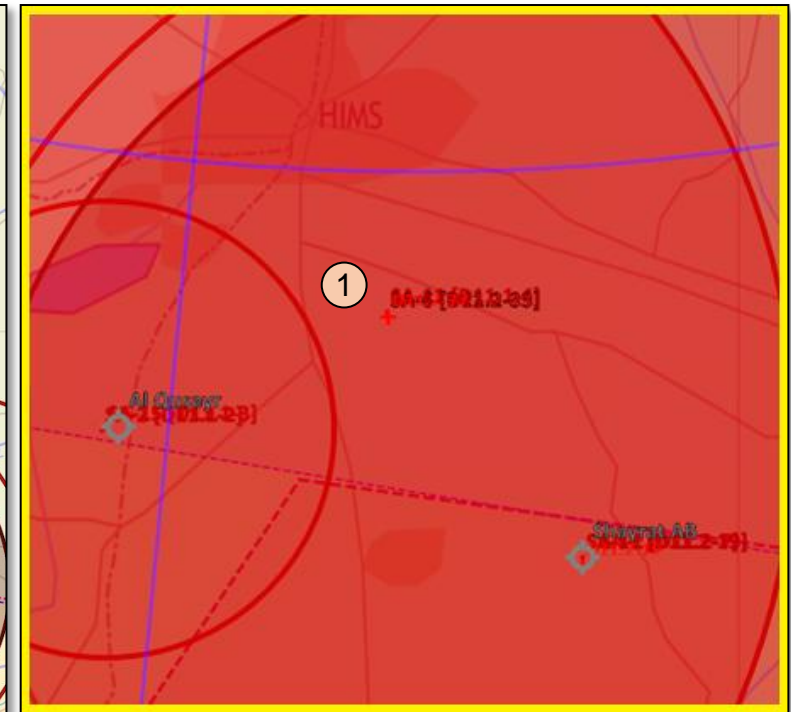
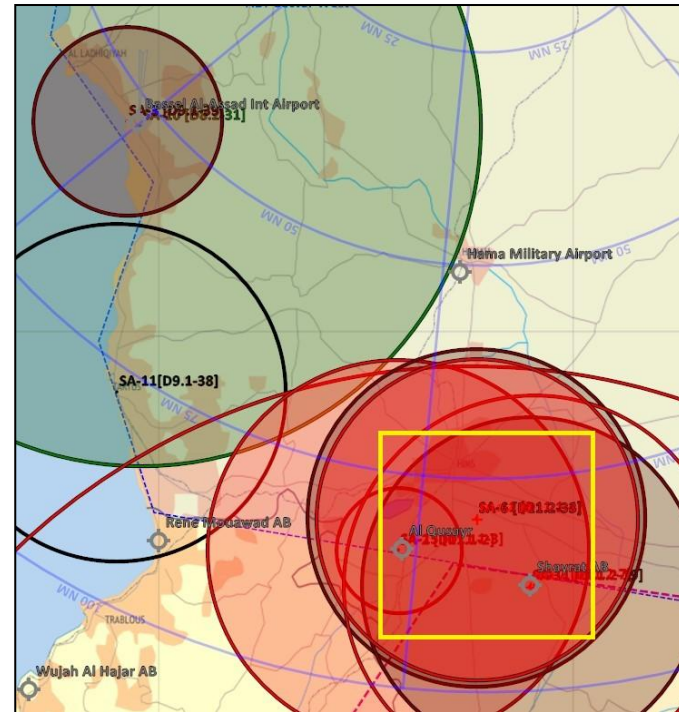
This is for multiplayer online gaming using the Digital Combat Systems simulation software published by Eagle Dynamics. The information is not in any way suitable for real world use or operations.



# ENEMY SITUATION (IADS)



- **Important Events during D11: Sector West**
  - ① Strike on SYTGT062 (Syrian Air Defence Academy):
    - Total Strength estimated at:
      - 1x SA-11 BN (= 2x BY)
      - 1x SA-6 BN
    - BDA:
      - 1x SA-11 SR
    - Units left post-strike:
      - 4x SA-11 TELAR
      - 1x SA-11 SR
      - 1x SA-6 BN (1x STR, 4x TEL)
    - In accordance with VID INTSUM D11 2.3.1 VIS assesses that remaining SA-11 and SA-6 systems will be deployed away from SYTGT062 before or during D12
    - VIS does not recommend further strikes on SYTGT062 at this time



DISCLAIMER:

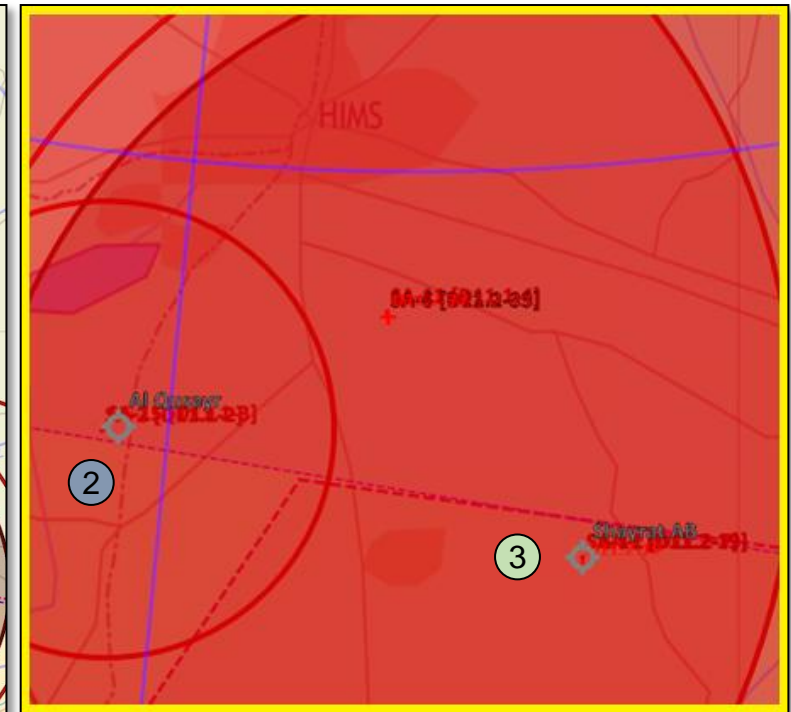
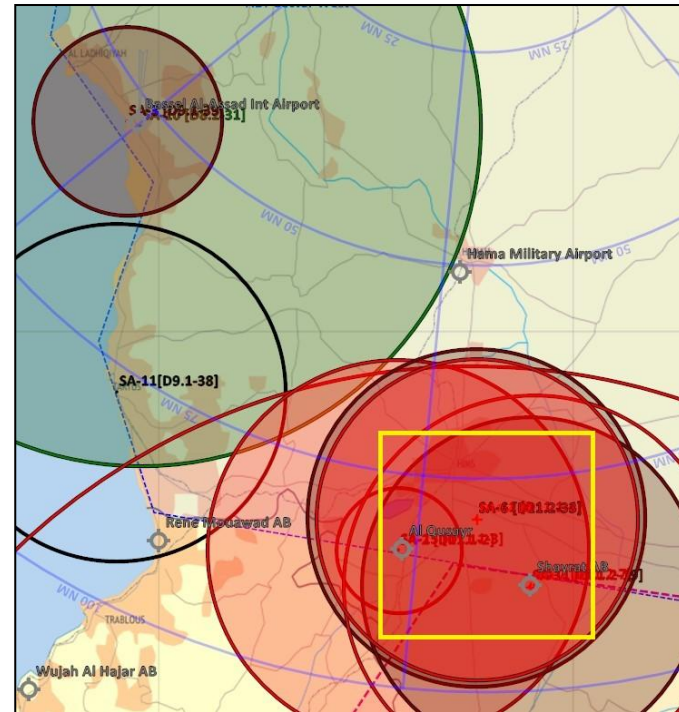
This is for multiplayer online gaming using the Digital Combat Systems simulation software published by Eagle Dynamics. The information is not in any way suitable for real world use or operations.



# ENEMY SITUATION (IADS)



- **Important Events during D11: Sector West**
  - ② SA-2 and SA-15 spotted at Al Qusayr
- **Important Events during D11: Sector South**
  - ③ SA-2 and SA-11 spotted at Shayrat AB
    - BDA:
      - 3x SA-11 TELAR
      - 1x SA-11 SR
      - 1x SA-15
    - Units left post strike
      - 1x SA-11 TELAR (assuming full BN present)
      - Unknown amount of SA-15 (D11.2-19)
      - Possible SA-2



**DISCLAIMER:**

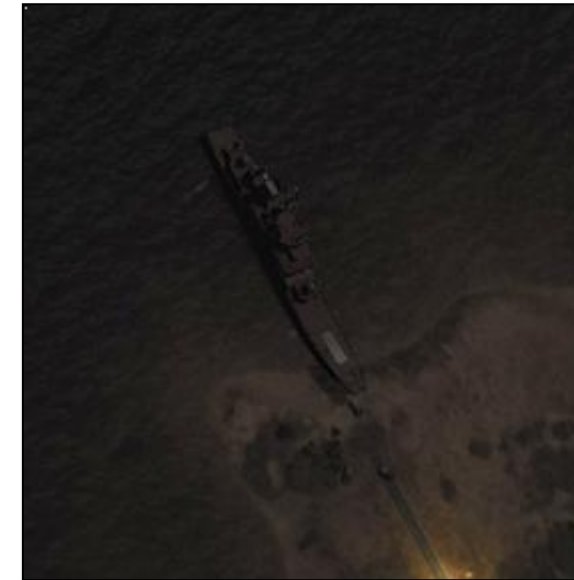
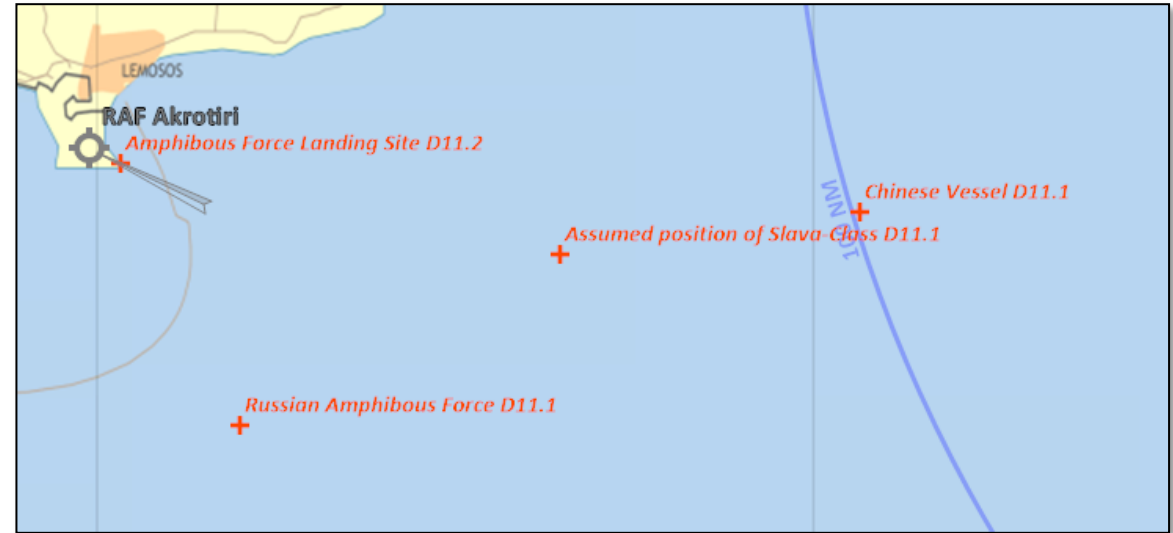
This is for multiplayer online gaming using the Digital Combat Systems simulation software published by Eagle Dynamics. The information is not in any way suitable for real world use or operations.



# ENEMY SITUATION (SEA)



- **Important Events during D11.1**
  - Multiple engagements of coalition aircraft by Slava-Class radar
  - ASHM attack against CSG-1. Minimum of 8 sea-skimming missiles. No hits on coalition warships
  - 2x Tu-142 BEAR ASW/Maritime patrol aircraft active over Russian Amphibious force, low flight profile suggests ASW role
- **Important Events during D11.2**
  - Large-scale Russian activity over cyprus
  - 3x Ropucha-Class reported offloading armoured vehicles IVO RAF Akrotiri
  - No reports of an exchange of fire visible from the air



**2.2.1 Russian amphibious landing ship (Ropucha) capacity**  
 VID have the following assessment of the capacity of Russian landing ship Ropucha:  
 The Ropucha is LIKELY able to carry the following:  
 - A mechanized/motorized/armored company (9x IFV/APC/Tanks, plus logistics)  
 OR  
 - 3x MBT, 3x 2S9 Nona artillery and 5x MTLB APC and logistics support vehicles  
 (Amphibious company task group. A self sufficient combat unit)

**2.2.2 Chinese landing ships (Type 071 Amphibious transport dock) capacity**  
 VID have the following assessment of the capacity of Chinese landing ships:  
 A Type 071 is LIKELY able to carry one battalion of ground forces, supported by a battery of artillery.

DISCLAIMER:

Systems simulation software published by Eagle Dynamics. The information is not in any way suitable for real world use or operations.



# ENEMY MOST LIKELY COA (air)



- Increasing escalation between Russian and Coalition forces.
- After the Russian airborne/maritime landing near Akrotiri, another possible landing **LIKELY** to occur near Lanarca (ships approaching the coast).
- On D11 Russians engaged coalition forces (e.g. F-16 into Incirlik and AWACS) and splashed 1x Coalition aircraft.
- Assessment Russian **POSSIBLE** COA from D10 became reality on D11 (invasion of Cyprus)
- VIS AIR **highly** recommends classification of Russia as ENEMY.
- VIS AIR **highly** recommends preparation against possible action out of Bassel-AI Assad and/or carrier group expecting to arrive in the AO on D14.
- VIS AIR recommends preparation of plans to counter possible Chinese intervention.







- A strong Russian/Chinese presence on Cyprus, maybe together with an IADS package, could severely hinder Coalition operations from the Carrier and the entire EMED.
- Russia continues to conduct bomber missions approaching the Carrier; **HIGHLY LIKELY** testing coalition reaction or as a show of force.
- If a Russian strike against the coalition carrier group or land assets was a pre-planned course of action, VIS would assess **LIKELY** for such a strike. VID report from D10:
  - Unusual very low activity around Russian and Chinese bomber bases outside EMED in the last 24hrs.
  - Level of activity **LIKELY** to be connected with increased maintenance action on aircraft.
  - **EVEN CHANCE** that this is preventive maintenance to prepare aircraft for higher activity or maintenance after high activity level after last week.
- China still passive conducting **LIKELY** reconnaissance flights South of Cyprus.





# ENEMY COA



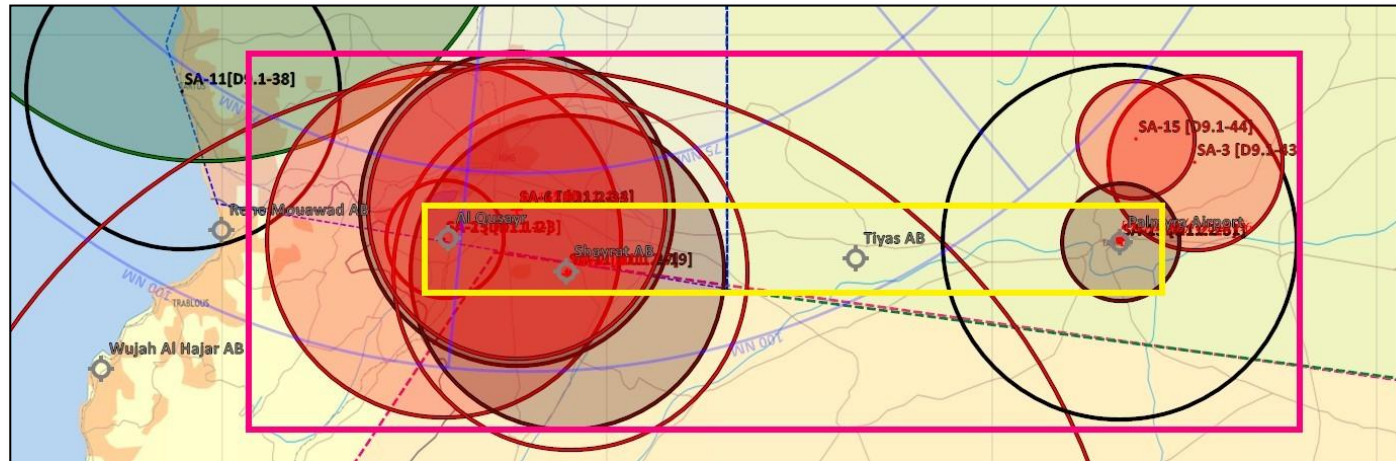
## IADS

### **MOST LIKELY COA:**

VIS assesses the high concentration of SAMs around the Shayrat-Tiyas-Palmyra line (see below) to be indicative of high value of these airfields to Syrian forces. With some attrition of these SAMs systems VIS assesses that at some if not all of the units deploying from SYTGT062 will reinforce these airfields. VIS assesses that these Units will be controlled by either SCC South or backup SCC East.

Yellow: SAM positions

Pink: SAM WEZs



### **MOST DANGEROUS COA:**

VIS assesses a large-scale effort to push MERAD units (SA-11, SA-6) further north (Tabqa, Tal Siman, Kharab Ishk) a significant threat to coalition aircraft operating in the area.

**DISCLAIMER:**

This is for multiplayer online gaming using the Digital Combat Systems simulation software published by Eagle Dynamics. The information is not in any way suitable for real world use or operations.



# TARGETING RECOMMENDATION (IADS)



~~VIS recommends strike on SYTGTO62 (Air defence academy) **ASAP** (TST, 1-3 days) to destroy 1x SA-11 BN and 1x SA-6 BN that arrived on D10 (VID INTSUM D10 2.3.2) (VIS assessed priority **A**). VIS assess likely location to be “Advanced training area”.~~

~~Additionally 4x SA-6 Launcher + 1x SA-6 SR and 4x SA-11 Launcher are **LIKELY** on the way or at SYTGTO62~~

VIS recommends ISR and, if confirmed, Strike on SCC East **LIKELY** located at Palmyra AB (VIS assessed priority **A**)

VIS recommends further SEAD/DEAD efforts against any SAMs IVO Tal Siman and Tabqa to deny the use of the airfield and form a permissive environment in the northern half of ADF Sector East to facilitate strikes against Shayrat, Tiyaas and Palmyra. (VIS assessed priority B)

VIS recommends DEAD (if confirmed by ISR/ELINT) on SA-3 at Kuweires (VIS assessed priority D).



# ENGAGED TARGETS



**RESPONSIBLE: VIS**

TGT	NAME	DAY	STATUS	AMPLIFYING INFORMATION
SYTGT001	Syrian Army HQ	D1.2 / D5.1	Destroyed D5.1	
SYTGT002	Syrian Army HQ	D1.2 / D5.1	Destroyed D5.1	
SYTGT075	Syrian 1 <sup>st</sup> Corps Base	D1.2	UNKNOWN	No reported BDA
SYTGT041	Abu al Duhur Airbase	D2.2		Target was SCC WEST and infrastructure on airfield Reported BDA: "We are not sure of the status of the SCC WEST after the engagement. The attached screenshot shows the status after the attack. Two GBU-31s were used against the target." "Primary fuel tanks at Abu Al Duhur From our BDA it looks like the tanks took no damage from our GBU-38 that we used."
SYTGT040	Tabqa airbase	D3.2 D11.1		No reported BDA on D11 (Campaign manager)
SYTGT044	Hama airbase	D4.2 /D9.1		AAR from D9.1: "Excavators still on runway. One group hit at the middle of the runway with GBU-38. Other GBU dropped in the northern half of the runway. Fuel depot/Ammo storage hit and burning by package members" "1x Parked MiG21, confirmed destroyed"  Reported on D11.2: "2x Repair crews on HAMA runway. Don't know if that suggests a level of repair completion."
SYTGT068	SCC East	D7.1/ D8.1	Destroyed	VID BDA: <a href="#">VID BDA Tabqa D8</a>
SYTGT062	Syrian Air Defense Academy	D8.2/D11.1		
SYTGT022	Raqqa Vehicle factory	D9.1/ D9.2/D.10.1 /D11.2	DMPI 3, 4, 5, 6 Destroyed	Reported BDA after D11.2: «DMPI 3, 4, 5, 6 Destroyed»
SYTGT011	Ragga ammunition factory	D10.1		
SYTGT021	Tartus Vehicle factory	D10.1 / D11.1		Reported BDA after 11.1: "Targets destroyed"
SYTGT045	Palmyra airbase	D11.2	Destroyed. INOP for 6 days	6x MK84 impacted the runway confirmed with explosions (each pilot reported impacts of his 2x MK-84s). Based on VID INTREP 004 (Syria as Candidate for Air Attack) section 6.7.1) this means that the runway in Palmyra will be out of action for 6 days
SYTGT012	Jirah SW Ammunition Factory	D10.1	DPI 1 ,2,3 and 7 destroyed	Reported BDA after D10.1: "SYTGT 012 – DPI 1 ,2,3 and 7 destroyed"



# NEW INTELLIGENCE REQUIREMENTS



**RESPONSIBLE: ALL**

Intelligence Requirement / Information gap	Nominated by	Latest time of value	Justification
<i>Example: Are there any SAMs located at Kuweires</i>	VIS IADS	D9	<i>In order to support LCCs plan, VIS want to ensure there is no SAMs present and Kuweires that can hamper operations against A-G flights in the area</i>
Reconnaissance of Akrotiri landing area	VIS AIR		Determine strength and composition of Russian ground forces
Preventive reconnaissance of possible Larnaca landing area	VIS AIR		Determine strength and composition of Russian ground forces
Reconnaissance and/or strike flight against Hama airfield (10x MiG-21 remaining)	VIS AIR		State of runway and repair efforts
Reconnaissance and/or strike flight against Tabqa airfield	VIS AIR		State of runway and repair efforts (IR46.2) Prevent build-up of strong IADS package at the airfield.
Reconnaissance flight against Khalkhalah AB	VIS AIR		Find „missing“ MiG-21
Reconnaissance flight against Marj Ruhayl AB	VIS AIR		Find „missing“ MiG-21

Indicators for a specific action from intelligence operations

- Basic information that help VIS build a better understanding of the situation
- Should be put on the VIS IR List, and JFACC should consider the list when tasking flights, and see if anyone is able to answer some of the Intelligence Requirements that are important to VIS

See [VIS TTP](#), section 4.4.1 Intelligence collection (page 45-48)

**DISCLAIMER:**

This is for multiplayer online gaming using the Digital Combat Systems simulation software published by Eagle Dynamics. The information is not in any way suitable for real world use or operations.